



Handheld Pressurized Steamer

The handheld steamer provides pressurized steam for easy removal of residual cured adhesive from grippers and workpieces. Economical solution for prototypes or low-volume parts.

Part # 84750

Features*

- 8 x 5.2 x 10.7 inches
- 3 lbs
- 6 oz water capacity
- Emits steam continuously for 10 minutes
- 15 ft power cord
- 900W
- 200°F steam temperature

*Actual unit may vary from one shown.



Table of Contents

FAQs	2-3
Quick Start Guide	4-5
Technical Specifications	6
Structure and Functions	6
Warranty	7

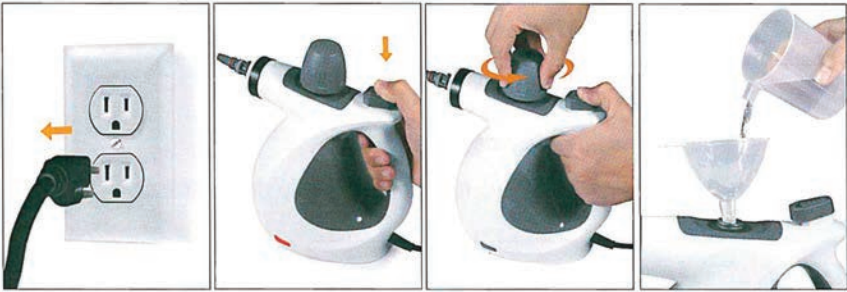
User Guide

FAQs

What's the highest temperature that this handheld steamer can achieve?

The internal temperature of our handheld steamer can reach 230°F (110°C) and the steam comes out at a temperature of 212-221°F (100-105°C). For safety, the designed temperature of the handheld steamer can only reach 230°F (110°C) to avoid damage in high temperature. Deep cleaning is not recommended because the cleaning at the designed temperature of 230°F (110°C) can secure personal safety when eliminating the stains. It is recommended that the cleaner is always plugged in.

If I want to add water again after use, why can't the safety cap be opened?



Unplug first.

Fully discharge the residual steam and wait for the red spot to sink down.

Open the cap.

Add water into the handheld steamer.

How to add water?

1. Fill with clean water using the measuring cup, up to the marking, no more than 250ml.
2. Fill with water into the boiler using the funnel without exceeding 250ml of water.
3. Close the safety cap firmly by turning clockwise.



CAUTION

For safety cautions, you should wait 3-5 minutes before removing cap. The handheld steamer needs to be cooled down in order to open and remove safety cap.

How to use the safety steam button?

As shown in the following pictures (Left: Locked, Right: Unlocked):



User Guide

Quick Start Guide



Open and remove the safety cap.



Add about 250ml of water with a funnel and measuring cup.



Replace and close the safety cap by turning clockwise.

04



Install the accessory nozzle.

05



Plug in the power cord and wait 3-4 minutes to warm up.

06



When the red LED light is off, you can use the handheld steamer after unlocking the safety lock.

User Guide

Technical Specifications

Model: WHL-603

Heating Time: 3-4 minutes

Voltage/Frequency: AC 110-120V, 50/60 Hz

Usage Time: 8-12 minutes

Rated Power: 900-1050w

Flow Rate: 28 g/min

Water Tank Capacity: 350ml

Steam Pressure: 0.26-0.32 Mpa

Structure and Functions



Handheld Pressurized Steamer Warranty

The warranty offers you specific legal rights. And you also have other rights which may vary from state to state.

Limited 90 Day Warranty

Subject to the exceptions and exclusions identified below, upon receipt of the product, we will repair and replace (with new manufactured components or products), at free of charge from the date of purchase of the original purchaser.

We offer a Warranty of 90 days for any defective or malfunctioning part.

See information below if product should require service.

This warranty does not apply to fans or routine maintenance components such as filers, belts, or accessories. Damage or malfunctions caused by negligence, abuse, neglect, unauthorized repair, or any other use not in accordance with the User's Guide is not covered.



www.BluePhotonGrip.com • 855-777-2040
1002 Industrial Park Dr., Shelby, MI 49455

©2022 Blue Photon Technology & Workholding Systems LLC. All Rights Reserved. Blue Photon has made every effort to ensure the accuracy of the product information in this document; however, we are not responsible for typographical discrepancies. Actual products may vary from those shown in photos. Refer to our website for current product and safety information. Blue Photon Handheld Pressurized Steamer P/N 84750 V1.0 10658 11.10.22